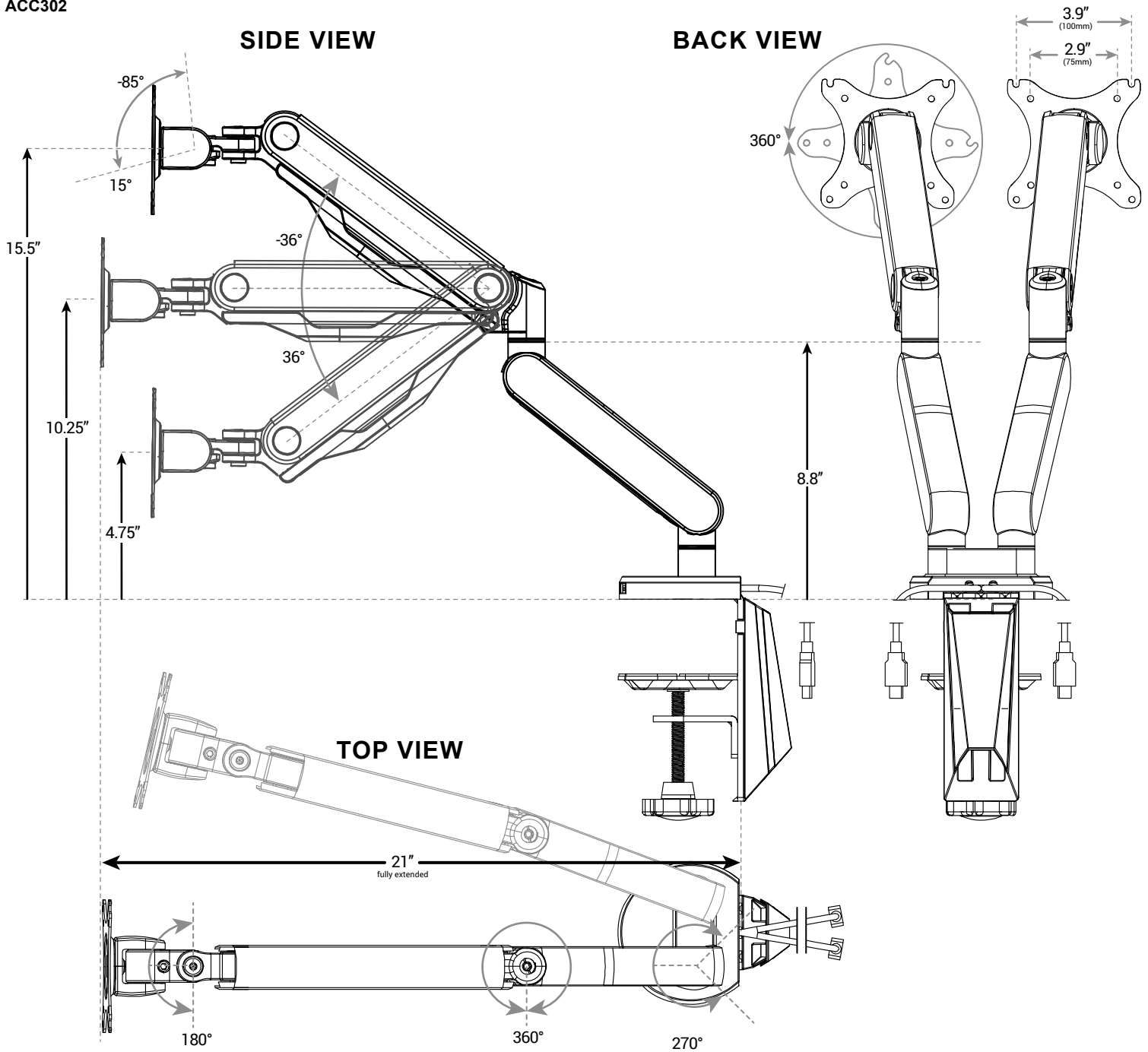


VIEW™ DUAL MONITOR ARM

UPLIFT DESK®

ACC302



CAPABILITIES

- Height Adjustment Range** 10.75" H
- Weight Capacity** 19.8 lbs per arm
- Display Rotation Range** 360° display rotation range
- Monitor Compatibility** VESA 75mm & 100mm
- Warranty** 5 Years

FEATURES

- USB jacks located in the clamp mount for easy plug access for peripherals.
- Allows you to easily adjust the height, depth and tilt of your monitor
- In-line wire management minimizes cable clutter
- Large, stable clamp mount attaches to desks up to 4.7" thick